

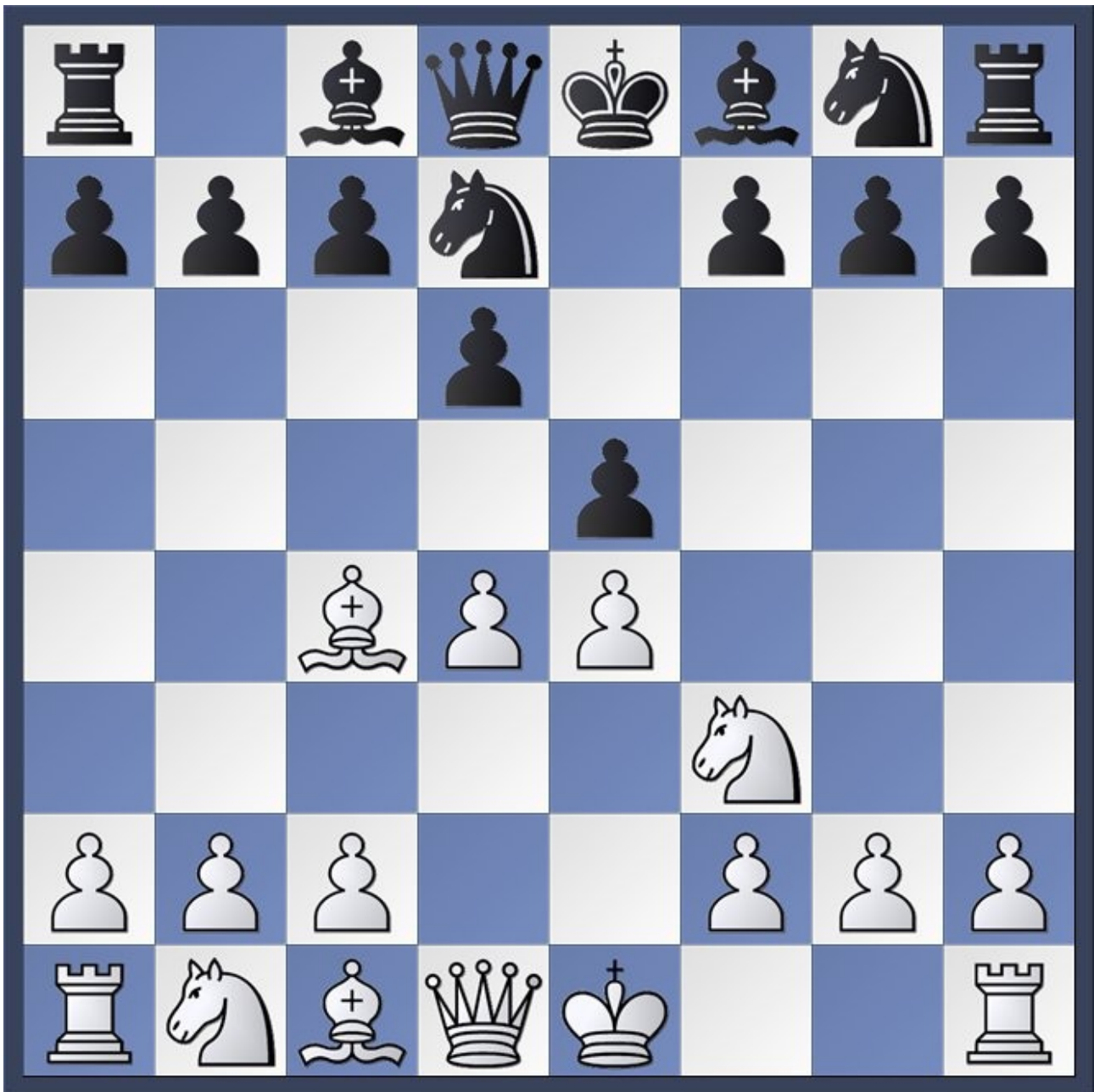
0 wtm

Evaluate the position

A	Black is Slightly Better
B	Whire is Slightly Better
C	Black has more space
D	Position is equal

What is the best move?

A	1. Rd1 +
B	1. Qd3 +
C	1. Qf4 +
D	1. Qxc3 +



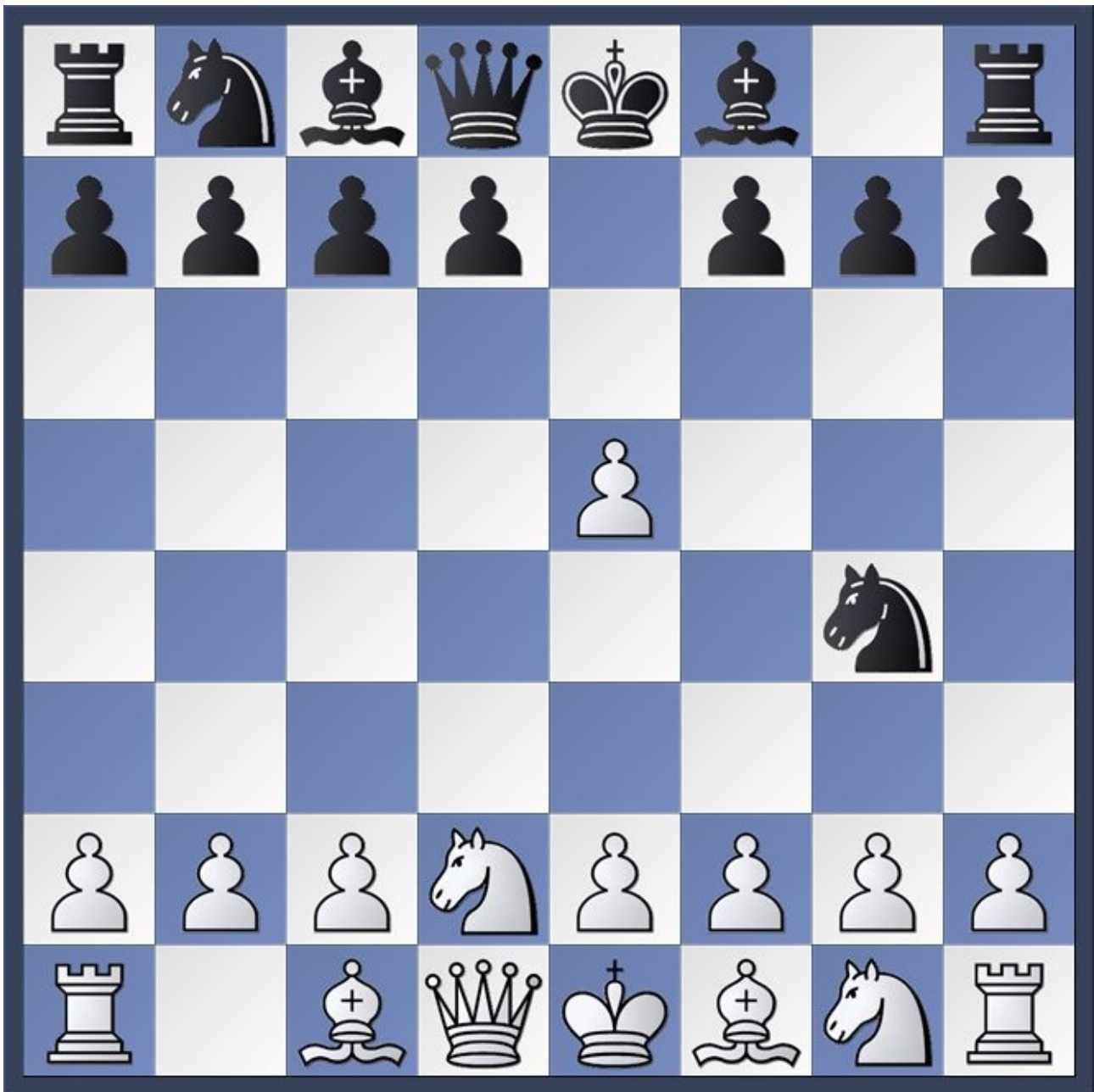
6 btm

Which is the most accurate statement?

A	White is Winning
B	Draw
C	Black has more space
D	Both B and C are correct

What is the best move?

A	4... Be7
B	4... Ngf6
C	4... c6
D	Both B and C are good choices



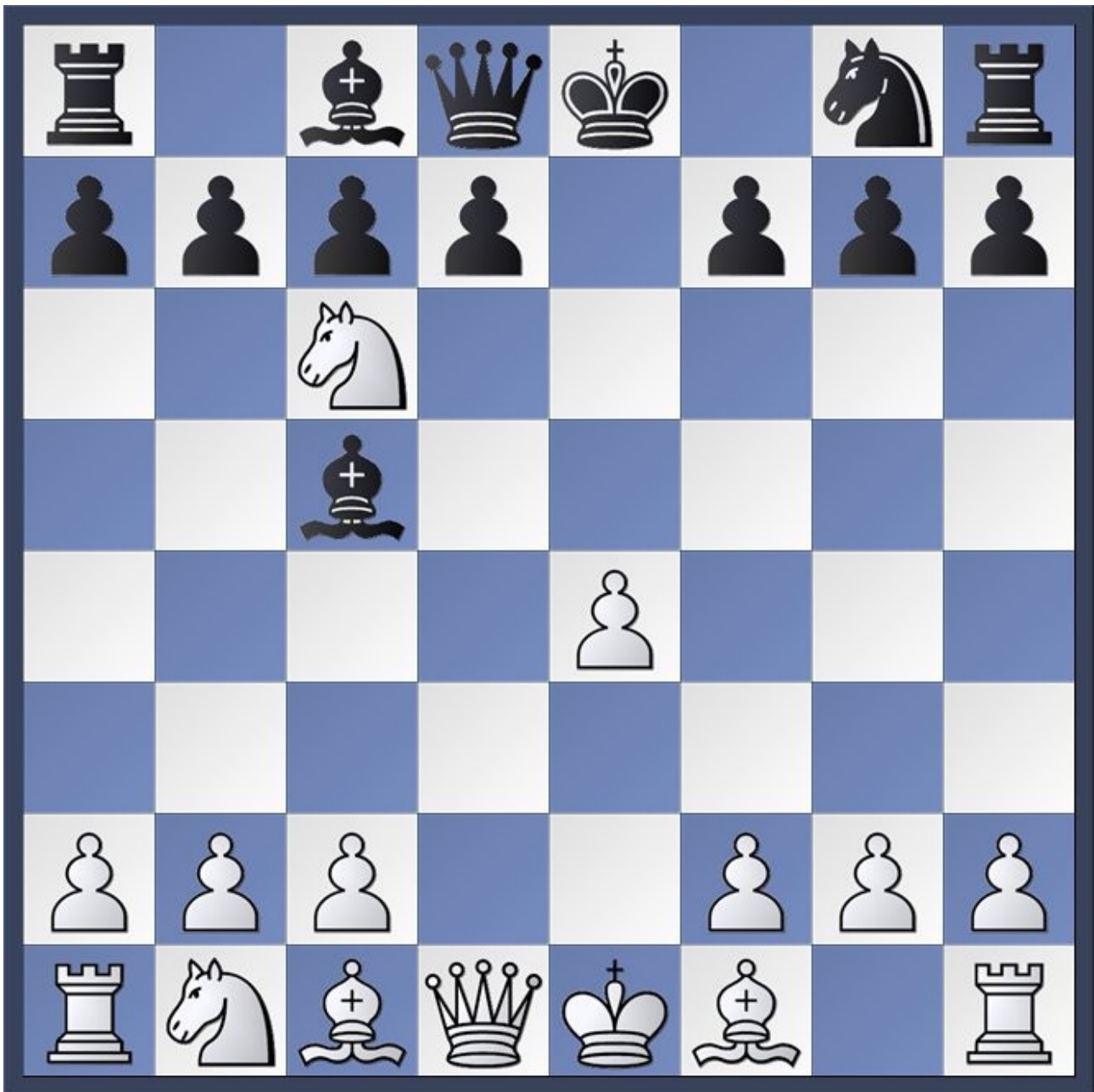
7 wtm

What is the best move?

A	4. h3
B	4. Ngf3
C	4. f4
D	4. e4

How should Black respond to 4. e4 ?

A	4... Qh4
B	4... Bc5
C	4... Nxe5
D	4... Nxf2



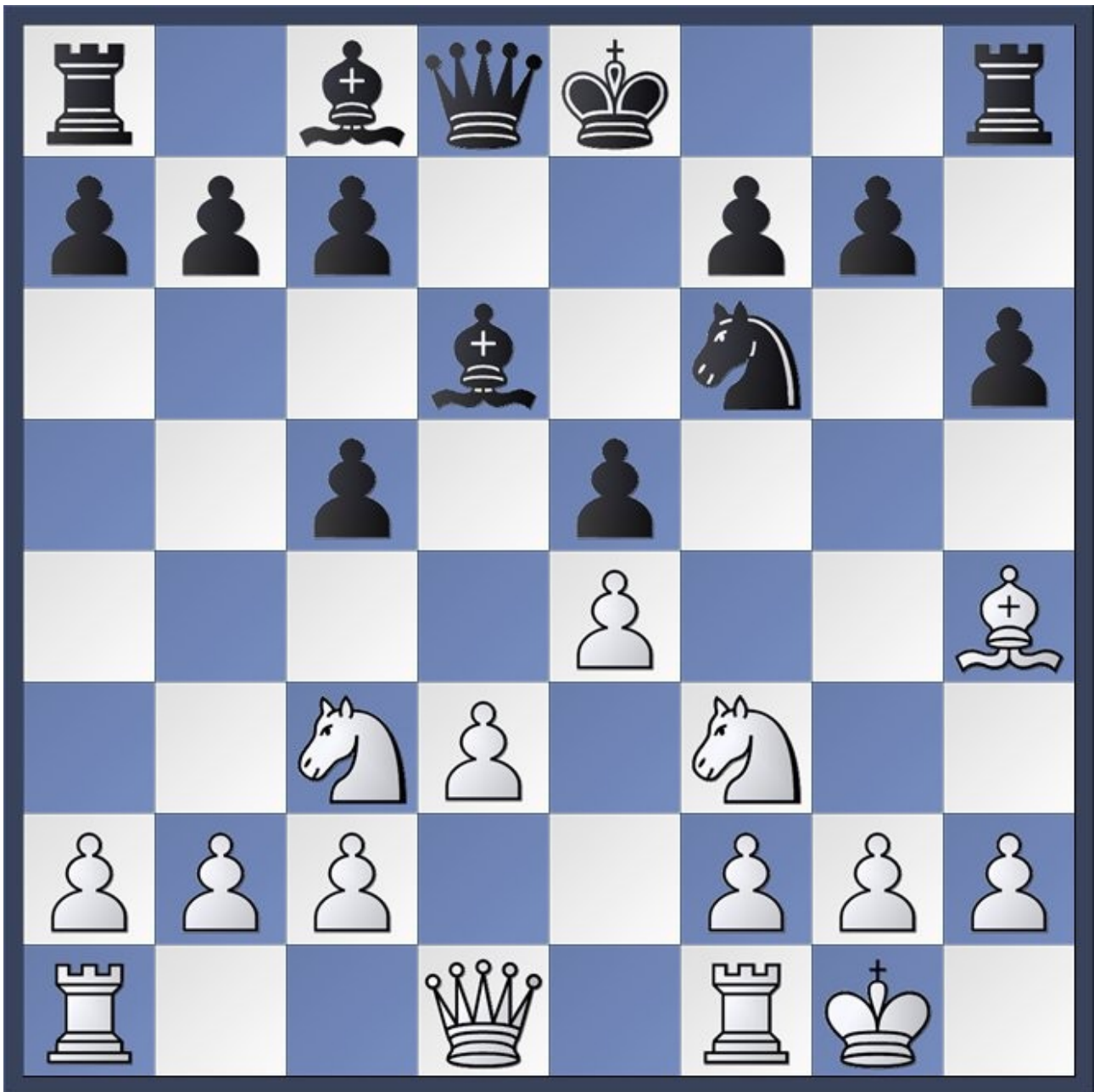
8 btm

What is the best move?

A	4... Qf6
B	4... Qh4
C	4... bxc6
D	4... dxc6

If Black played 1...bxc6. Which is true?

A	White is more likely to castle King-side than Queen-side
B	White is more likely to castle Queen-side than King-side
C	Black is more likely to castle Queen-side than King-side
D	B and C are correct



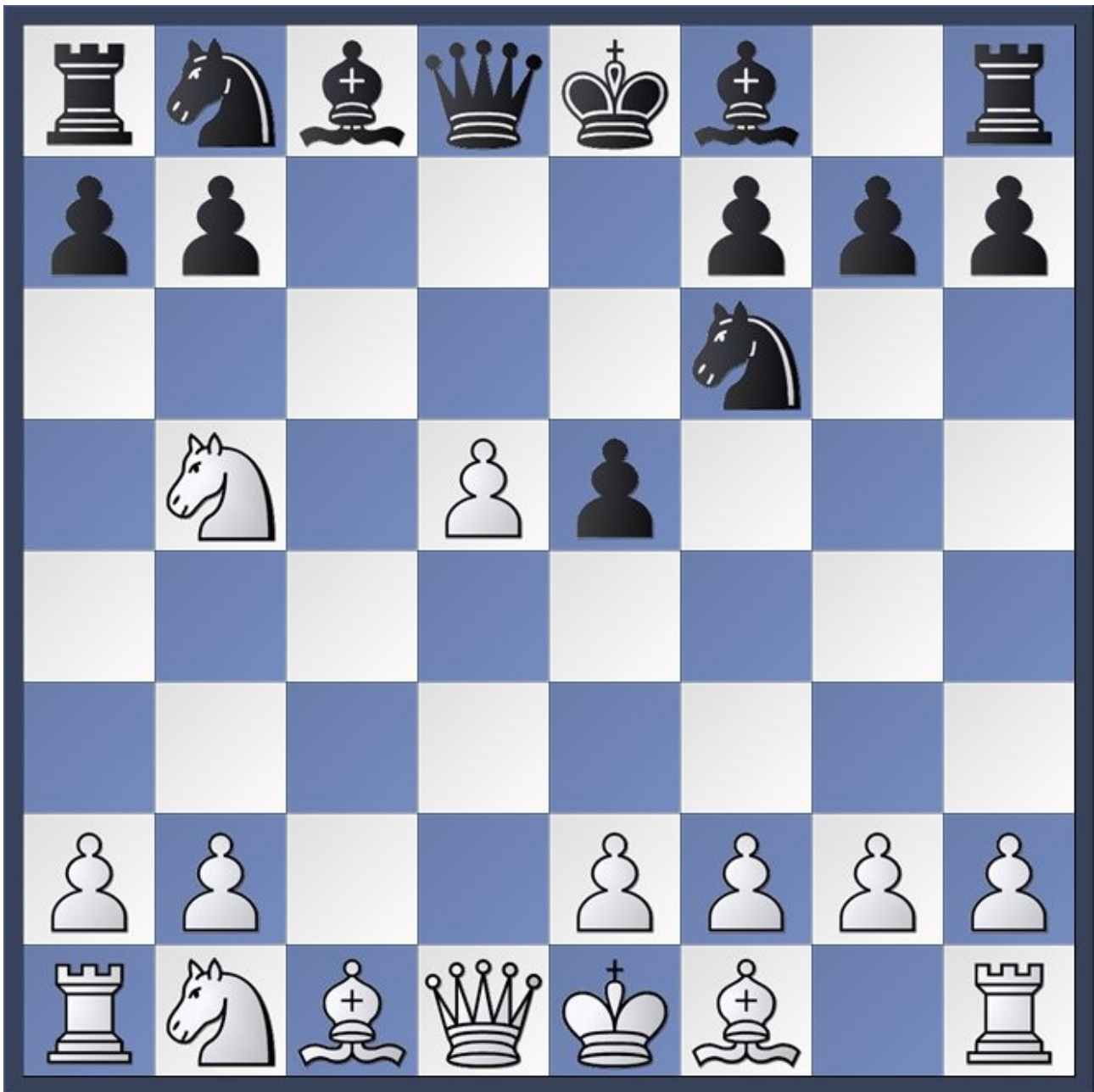
44 wtm

Evaluate the position

A	Black is Slightly Better
B	Position is nearly equal
C	White is Slightly Better
D	White is Winning

What is the best move?

A	1. Nd5
B	1. Qe2
C	1. Bxf6
D	1. h3



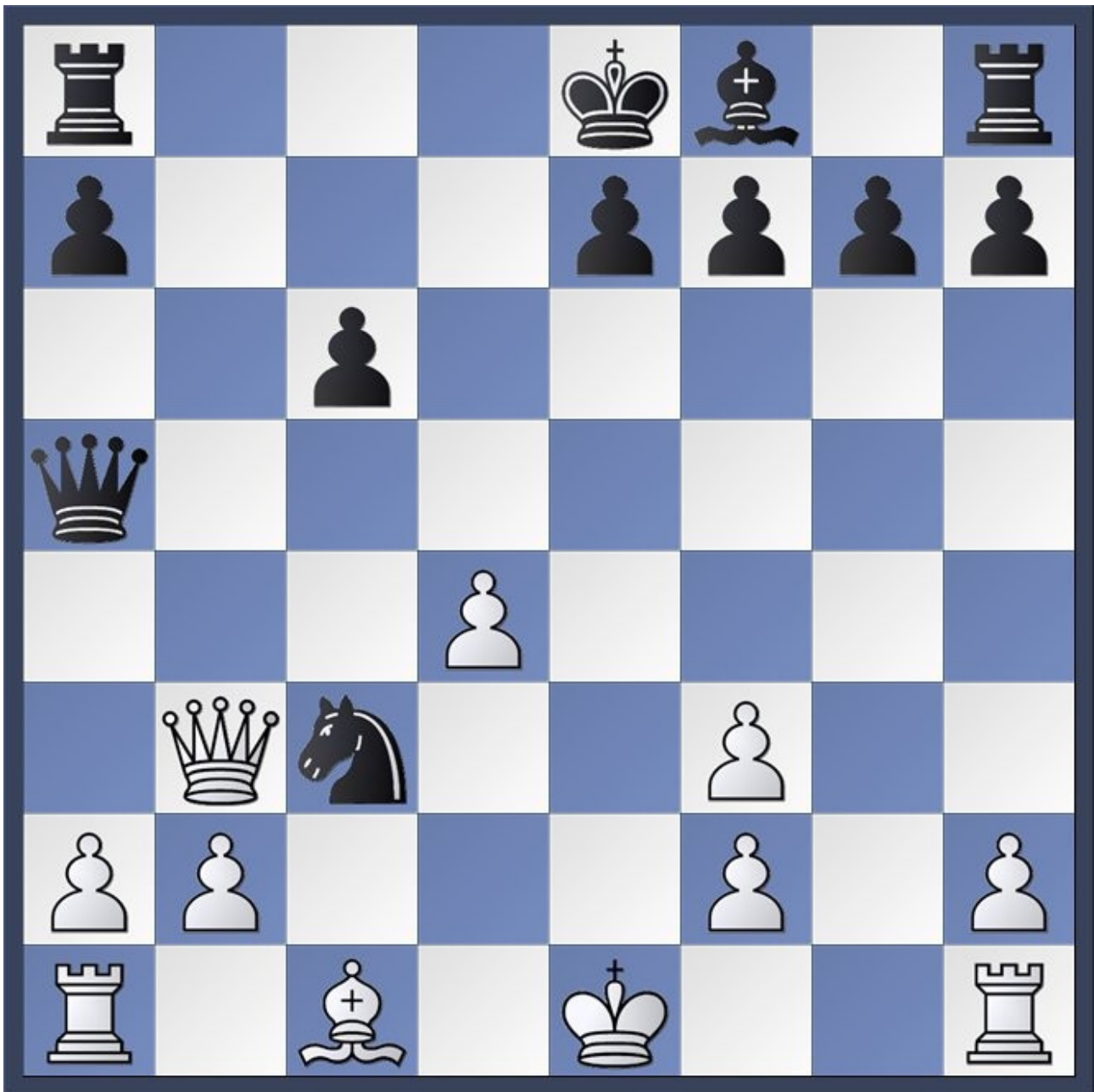
85btm

Evaluate the position

A	White is Winning
B	White is Slightly Better
C	Position is nearly equal
D	Black is Slightly Better

What is the best move?

A	1... Qxd5
B	1... Nxd5
C	1... Bc5
D	Both A and B are equally good for Black



90 wtm

Evaluate the position

A	White is Winning
B	White is Better
C	Position is nearly equal
D	Black is Better

What is the best move?

A	1. bxc3
B	1. Qxc3
C	1. Qb7
D	1. Bd2